

Back of thermostat

Technician Settings:

Change/modify the following parameters:

- Cool and Heat temperature limits.
- T-Duct Cool and Heat.
- Offset for measured temperature.
- Lock configurations.

Enter settings mode:

- Set COOL temperature to 10°C or 50°F (The thermostat **must** be in cool mode)

If the thermostat mode is HEAT do one of the followings:

- Wait until the A/C system mode changes to COOL and then change the set-temperature to 10°C.
 - Disconnect the duct sensor connections, press the [Select] button twice and change the mode to COOL using the "+" or "-" buttons and then change the set-temperature to 10°C. Reconnect the duct sensor.
 - Use the Remote Control to send the set-temperature to the thermostat. Both set-temperature for heating and set-temperature for cooling will be changed, although the thermostat is in HEAT mode. Then change the set-temperature to 10°C.
- Wait until the number "10" stops flashing, and then:

Set temperature limits:

- Press and hold the [Select] button (15 seconds) until "Cool" and "Set" flashing appear on display.
- Using the [+] and [-] buttons, adjust the temperature limit for cooling (range 10...25°C or 50...77°F).
- Press the [Select] button again - "Heat" and "Set" flashing appear on display.
- Using the [+] and [-] buttons, adjust the temperature limit for heating (range 20...30°C or 68...86°F). (Thermostat defaults are "Cool limit" - 10°C/50°F, "Heat limit" - 30°C/86°F)

Set T-Duct Cool and Heat:

- Press the [Select] button again - "Cool" and "Aux" flashing appear on display.
 - Using the [+] and [-] buttons, adjust the temperature limit for Tduct in cooling (range 10...27°C or 50...81°F).
 - Press the [Select] button again - "Heat" and "Aux" flashing appear on display.
 - Using the [+] and [-] buttons, adjust the temperature limit for Tduct in heating (range 12...32°C or 54...90°F).
- (Thermostat defaults are "Cool Duct Temp" - 22°C/72°F, "Heat Duct Temp" - 26°C/79°F)

Set the offset for temperature reading:

- The offset is used to calibrate the measured temperature when needed.
- Press the [Select] button again - the current offset appears on display (a number between -5°C to +5°C or -9°F to +9°F).
 - Using the [+] and [-] buttons, adjust the offset.
 - Press the [Select] button or wait to return to normal display mode.

Lock Configurations

The thermostat can be configured to prevent the user from making changes to certain functions.

The options are:

- 0 - Normal mode - all the functions are operative.
- 1 - Prevent Mode selection (only when the duct sensor is connected).
- 2 - Prevent Mode selection and Temperature adjustments.
- 3 - Prevent the user from making any changes.

In order to select one of these options, follow these steps:

- Set the set-temperature for COOL to anything **except for** 10°C or 50°F (See detailed explanation above for HEAT mode).
- Wait until the display returns to normal mode.
- Press and hold the [Select] button (15 seconds) until "0","1","2" or "3" appear on display.
- Using the [+] and [-] buttons, select between the 4 options.
- Press the [Select] button again or wait to return to normal mode.

Operating Manual:

On / Off

- Press the [ON] button to turn the thermostat ON or OFF.

Temperature scale and Mode (duct sensor not connected)

- Press the [Select] button once and use the [+] and [-] buttons to switch between temperature scales.
- Press the [Select] button again and use the [+] and [-] buttons to switch between modes.
- Press the [Select] button again to return to normal display.

Temperature scale (duct sensor connected)

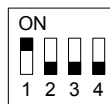
- Press the [Select] button to switch between temperature scales.

*Note: The Mode cannot be selected when a duct sensor is connected to the thermostat.

DIP Switches:

Defaults:

- DIP switch no. 1 - "ON"
- DIP switch no. 2 - "OFF"
- DIP switch no. 3 - "OFF"
- DIP switch no. 4 - "OFF"



Damper in Dead-Band Position

- Damper Close in Dead-Band - DIP switch no. 3 - "ON"
- Damper Open in Dead-Band - DIP switch no. 3 - "OFF"

Open/Close Time Motor

- Move DIP switch no. 4 to "ON" position - a number and "Aux" flashing appear on display.
- Using the [+] and [-] buttons, adjust the open/close time motor. Multiply the set number by 10 to get the real open/close time. i.e. 15 --> 150 sec. range 1-40 (10-400 seconds), default 15 (150 seconds).
- Move DIP switch no. 4 to "OFF" position to return to normal display mode.

meitav-tec

Tel: +972-3-9626462
 Fax: +972-3-9626620
 e-mail: support@meitavtec.com

Title:

FMT24-AZC-P

Date: **Oct 23, 2008**

No.

Revision

Date

Print: FMT/PV,OUT- FMT485/3W/T

Checksum: b1cd

Software name: fmtazc54

File name: FMT24-AZC-P.VSD

Drawn: P.Rechtman

Checked: A.Star

Approved: E.Roy